



Fluid Power Pneumatic Division

# SOLENOID VALVES

## 400 SERIES

5 port, 4 way

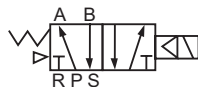


400 Series (5 port, 4 way)

### SPECIFICATIONS

Media	Air (No other gases or liquids)
Operation	Solenoid (Direct Acting)
Function	5 port, 4 way
Operating Temp. Range	41 - 140°F (5 - 60°C)
Maximum Pressure	10.5 Kg/cm <sup>2</sup> (150psi)
Working Pressure	1.5 - 8.0 Kg/cm <sup>2</sup> (21-114psi)
Orifice	18 mm <sup>2</sup> - 30 mm <sup>2</sup>
Flows	
Lubrication	None Required
Maximum Cycle Rate	4 cycles/second
Insulation	Class F
Power Consumption	<b>AC: 4.5VA DC: 3.0W</b>

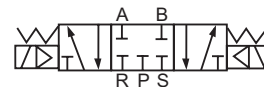
### SYMBOL



5 port, 4 way, 2 position  
(spring return,  
single solenoid)



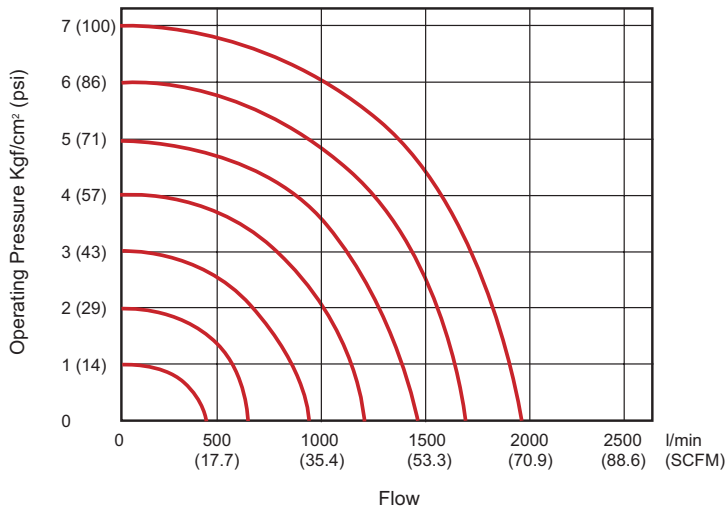
5 port, 4 way, 2 position  
(detented,  
double solenoid)



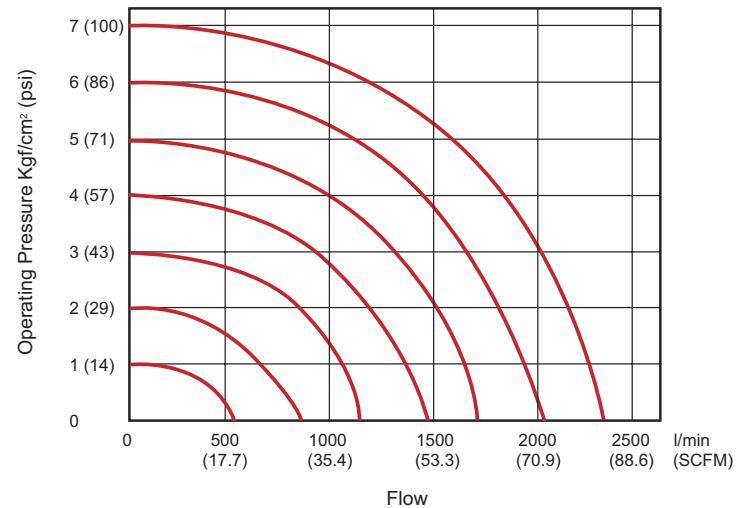
5 port, 4 way, 3 position  
(spring centered blocked,  
double solenoid)

### FLOW DATA

#### SV404 1/4"



#### SV406 3/8"





Fluid Power Pneumatic Division

# SOLENOID VALVES

## 400 SERIES

5 port, 4 way

### CONSTRUCTION MATERIAL

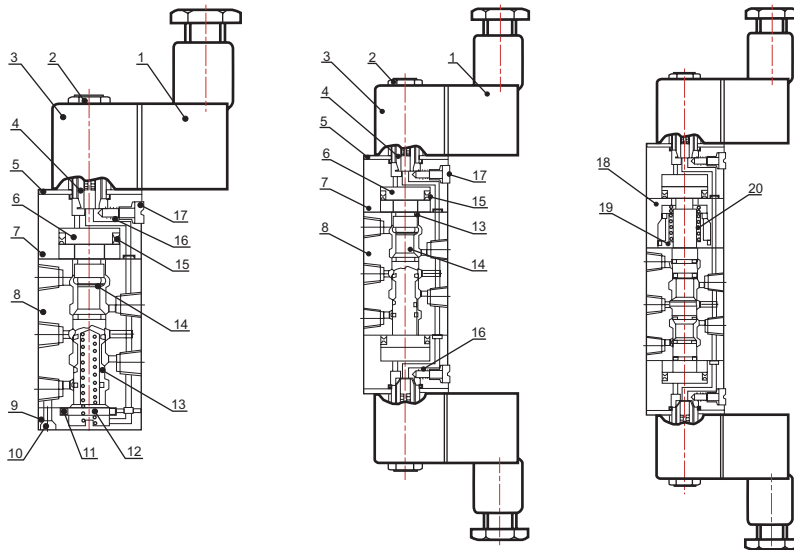
Name	Material			Name	Material		
	542S	542D	543B		542S	542D	543B
Body	Aluminum Alloy			Fixed Plate	Nickel Plated Steel		
Spool	Aluminum Alloy			Nut	Plastic		
Manual Override O-Ring	NBR			Manual Override	Plastic		
Connector Gasket	NBR			Bottom Cover	Zinc Alloy		
Spool O-Ring	HNBR			Manual Override Spring	Stainless Steel		
Bottom Cover Gasket	NBR			Spool Spring	Stainless Steel		
Pilot Gasket	NBR			Pilot Body	PBT+Glass Fiber		
Connector	Plastic			Fixed Screw	Iron		
Return Holder O-Ring			NBR	Coil Cover	Heat-Resistant Resin		
Return Kit			Copper	Manifold	Aluminum Alloy		
Side Cover			Aluminum Alloy	Piston	Plastic		
Return Spring			Stainless Steel	Armature	Pure Iron		
Return Spring Kit			Copper				

### PARTS BREAKDOWN

542S

542D

543B



No.	Name	No.	Name
1	Connector	11	Bottom Cover Gasket
2	Nut	12	Spool Spring
3	Coil	13	Spool O-Ring
4	Armature Assembly	14	Spool
5	Fixed Plate	15	Piston O-Ring
6	Piston	16	Override Spring
7	Pilot Kit	17	Manual Override
8	Body	18	Side Cover
9	Bottom Cover	19	Spring Holder
10	Fixed Screw	20	Return Spring

### ORDERING INFORMATION

SV - 404 - 542D - 110A - SRL

Code	Description	Model	Port Size	Code	Standard Configurations	Coil Voltage	Code	Electrical Connector
SV	Solenoid Valve	404	1/4"	542S	5 port, 4 way, 2 pos., spring return	omit (none)	omit	none
		406	3/8" (1/4" Exhaust)	542D	5 port, 4 way, 2 pos., detented (double solenoid)	12D (DC)	SR	Strain Relief
				543B	5 port, 4 way, 3 pos., spring centered-all ports blocked (double solenoid)	24A (AC)	CD	1/2" Conduit
						24D (DC)	LW	Lead Wire 36"
						48A (AC)	SRL	Strain Relief-Lighted (standard)
						110A (AC)	CDL	1/2" Conduit-Lighted
						220A (AC)	LWL	Lead Wire 36"-Lighted

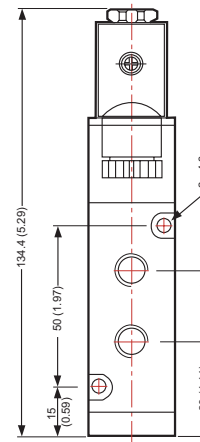
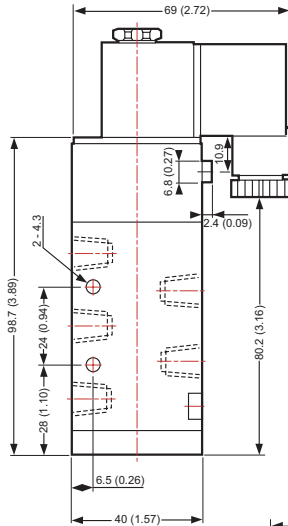
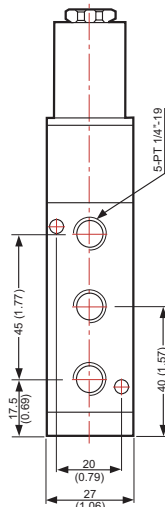
## 400 SERIES

5 port, 4 way

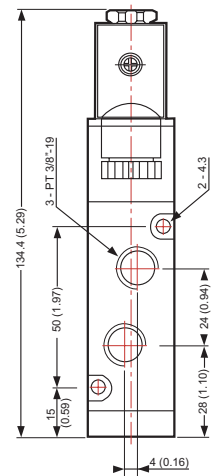
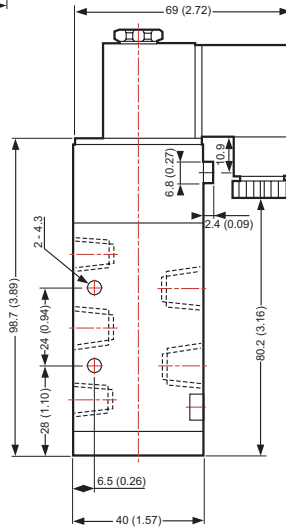
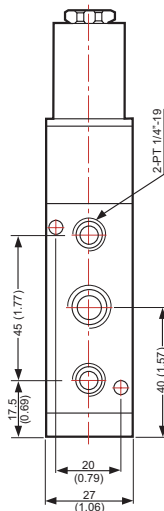
### DIMENSIONAL DATA

Units: mm/ (Inch)

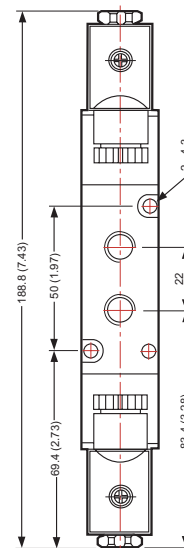
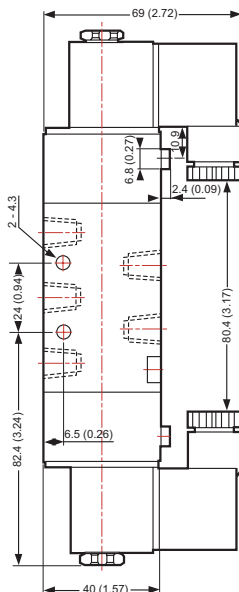
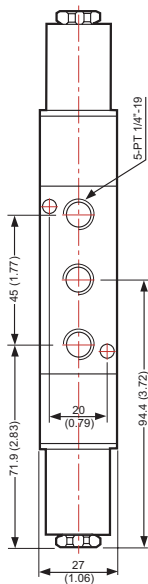
#### SV404-542S



#### SV406-542S



#### SV404-542D





Fluid Power Pneumatic Division

# SOLENOID VALVES

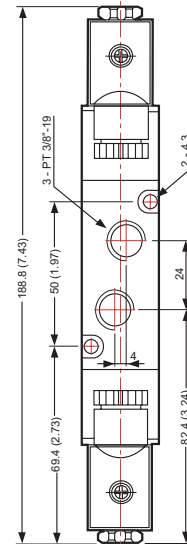
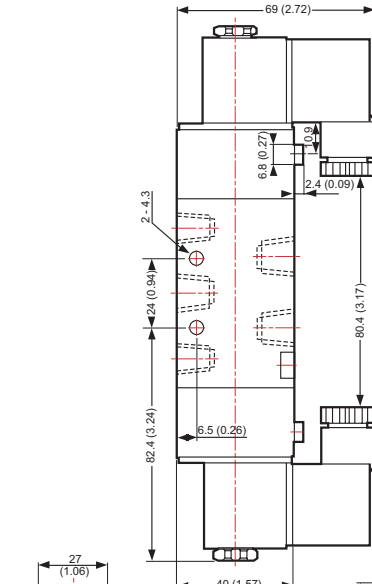
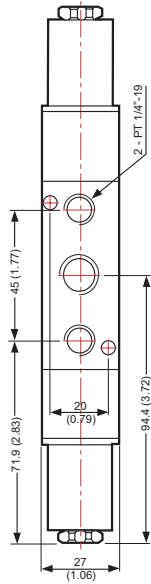
## 400 SERIES

5 port, 4 way

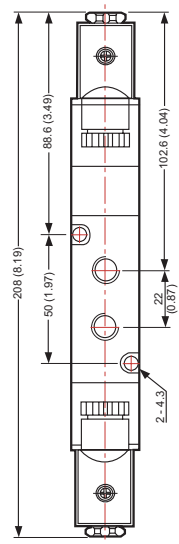
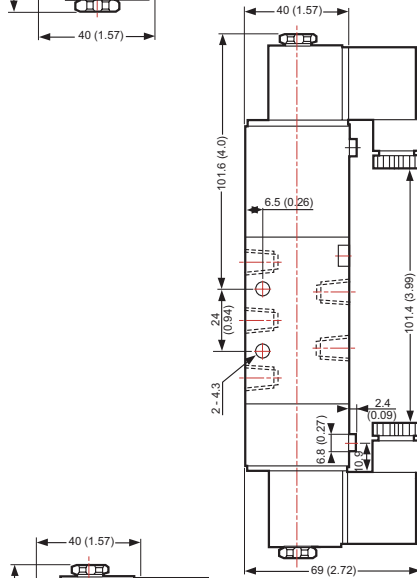
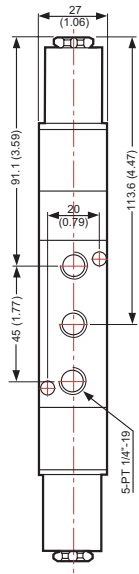
### DIMENSIONAL DATA

Units: mm/ (Inch)

SV406-542D



SV404-543B



SV406-543B

