

CARTRIDGE VALVES

SHUT OFF VALVES



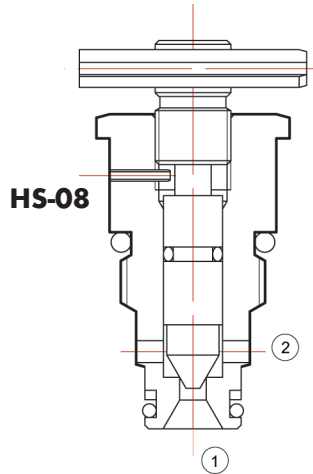
SAE6

FEATURES

- ✓ Hardened Seat for Long Life
- ✓ Zero Leakage Available at Shut-Off
- ✓ Full Range of Adjustments
- ✓ Positive Shut-Off
- ✓ Compact Size

Specifications

1. Operating Pressure: 3000 PSI, (207 Bar)
2. Temperature: -30°F - +250°F (-35°C - +120°C)
3. Fluids: Mineral based fluids. For other fluid compatibility consult factory.
4. Recommended Filtration: ISO 19/15
5. Body Material: Anodized 6061T6 aluminum alloy rated at 3000 PSI (207 Bar)



Symbol

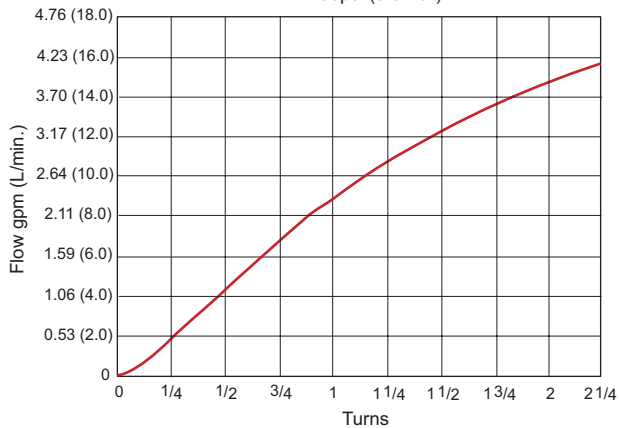


HS-08

Flow Characteristics

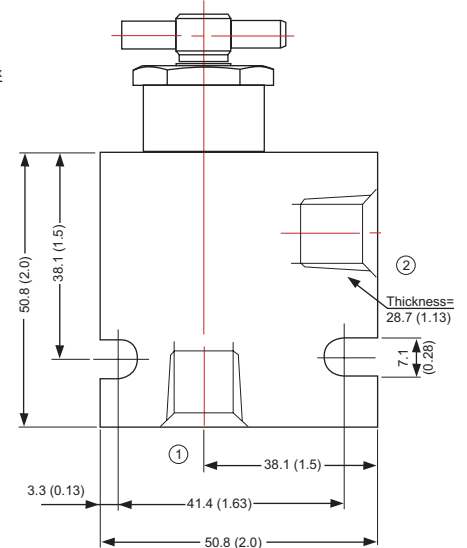
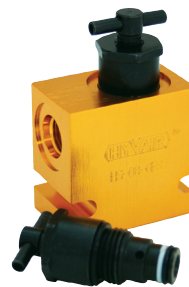
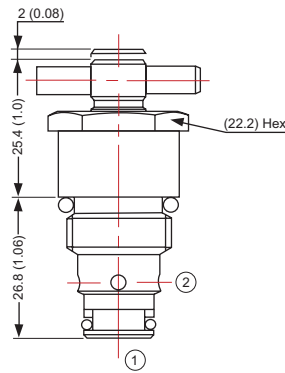
HS-08

150 ssu/32 cSt OIL @ 100°F/ 38°C
 $\Delta P=80\text{psi}$ (5.5 Bar)



Dimensional Data

Units: mm (inch)



ORDERING INFORMATION



CARTRIDGE SHUT OFF VALVE PART NUMBERING SYSTEM:

HS-08-6FS

Code	Description	Cavity	Code	Body Porting
HS	Adjustable, Shut Off Valve	08	omit	Cartridge Only
			6FS	SAE6