

# HYDRAULIC POWER UNITS

## STACK TANK



ST Series

### Features

- Flooded Suction:** Longer pump life; pump always stays primed. No pump rusting during shut-down periods. Air bleed valves are not required.
- Easy Reservoir Draining:** Pump not required for draining. Drain ball valve provided.
- Self Flushing:** System flushes any material in suction line when a pump is replaced.
- Color Code Identification:** Allows for easy identification of items.
- In-Tank Filter System:** Provides easy element replacement without line drainage.
- Convenient Suction Strainer Maintenance:** Clean out access cover allows replacement of suction strainer without draining reservoir.
- Removable Top Plate:** Removable top allows for easy reservoir cleaning. No leaky end bells that make access for cleaning difficult.
- Conserves Space:** While still allowing general maintenance, the stack tank design saves floor space.



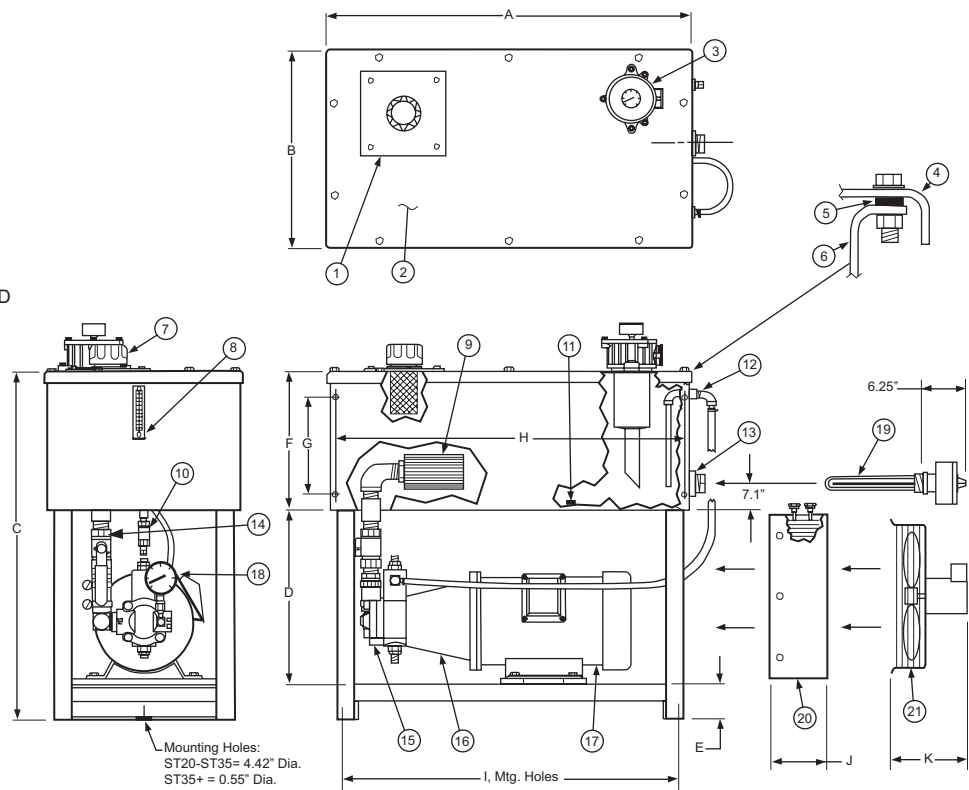
ST35 Stack Tank

### Dimensional Data

#### ITEM IDENTIFICATION:

- CLEAN-OUT COVER (YELLOW)
- VALVE MOUNTING AREA
- RETURN FILTER (YELLOW)
- TANK LID
- RUBBERIZED GASKET
- TANK BODY
- FILLER/ BREATHER #FB-12S  
(EXTRA BREATHER SUPPLIED 50 GAL+)
- SITE & TEMPERATURE GAUGE #SLG5
- SUCTION STRAINER
- 1/2" NPT DRAIN BALL VALVES- PLUGGED
- MAGNETS (1 PER 5 GALLONS)
- (3) RETURN COUPLINGS STANDARD
- 2" NPT HEATER COUPLING (OPTIONAL)
- SUCTION BALL VALVE
- PUMP
- PUMP MOTOR ADAPTER (ORANGE)
- ELECTRIC MOTOR
- PRESSURE GAUGE WITH SNUBBER
- HEATER (OPTIONAL)
- HEAT EXCHANGER (OPTIONAL)
- COOLING FAN (OPTIONAL)
- DRIP PAN (OPTIONAL)
- PAINT (OPTIONAL)

COLOR CODES:  
 BLUE- UNIT COLOR PAINT  
 ORANGE- DANGER  
 YELLOW- MAINTENANCE  
 GRAY- ELECTRICAL



Mounting Holes:  
 ST20-ST35= 4.42" Dia.  
 ST35+ = 0.55" Dia.

Model Number	Reservoir Capacity	Dimensions (Inches)											Std. Return Filter (10 $\mu$ )	4" Lip Drip Pan	Maximum Horsepower
		A	B	C	D	E	F	G	H	I	J	K			
ST20	20 Gallon	32.0	17.5	37.3	19.5	5.5	12.0	8	30.6	28.4	4.25	5.9	ITF200-12FS-10MNPE	30.9" x 48"	10
ST35	35 Gallon	36.5	22.5	41.0	21.5	6.0	13.5	8	35.3	32.5	4.25	6.0	ITF250-12FS-10MNPE	30.9" x 48"	15
ST70	70 Gallon	46.5	26.3	52.5	29.0	7.25	16.5	8	45.3	42.5	4.25	6.0	ITF425-24FS-10MNPE	38.8" x 52"	50
ST100	100 Gallon	46.5	26.3	58.3	29.0	7.25	22.0	8	45.3	42.5	9.0	6.0	ITF450-24FS-20-10	38.8" x 52"	100
ST150	150 Gallon	46.5	26.3	69.3	29.0	7.25	34.0	8	45.3	42.5	9.0	6.0	ITF450-24FS-30-10	38.8" x 52"	100



# HYDRAULIC POWER UNITS

## STACK TANK



ST Series

### ST20-5HP-PCV10

#### Stack Tank:

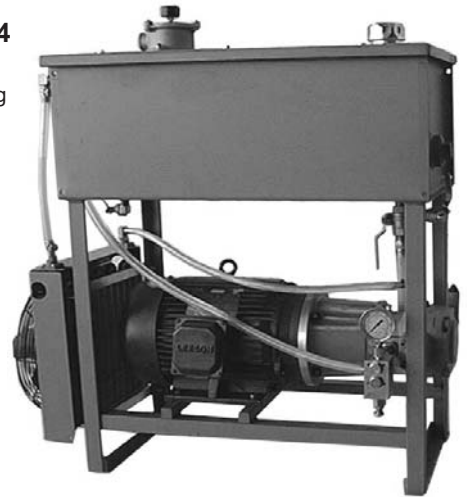
Heat exchanger cooling case drain line, D03 and D05 valves mounted on rail



### ST35-10HP-PCV14

#### Stack Tank:

Heat exchanger cooling case drain line, DR30 safety relief with gauge



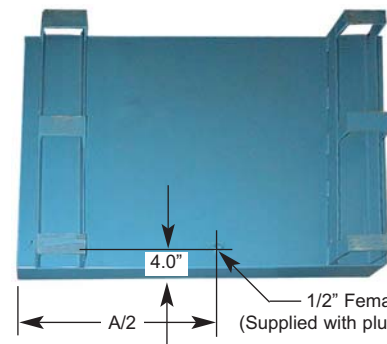
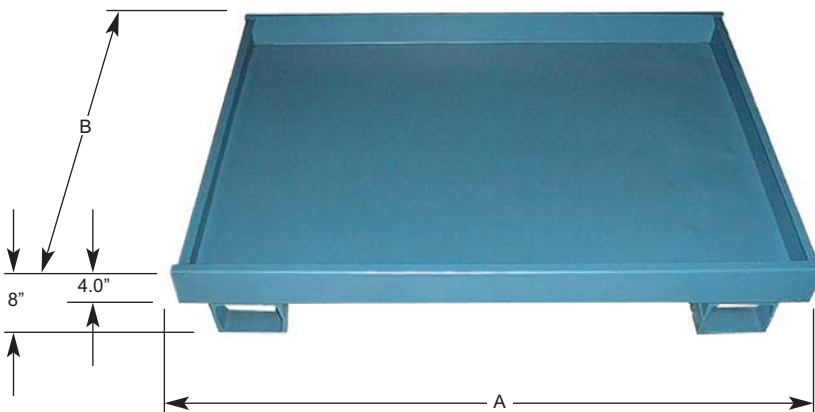
### ST100-75HP-PCP39

#### Stack Tank:

Heat exchanger cooling return line, P0R20 safety relief w/ gauge, 2.5 gallon accumulator, Motor starter package



## Drip Pans



Bottom View

Fork Lift Pockets:  
5.5" Wide x  
3.75" Tall

Model Number	Reservoir Capacity	A	B
DP35	35± Gallon	48"	30.9"
DP70	70+ Gallon	52"	38.8"



# HYDRAULIC POWER UNITS

## STACK TANK - RIGHT ANGLE



STR Series

### Features

- Flooded Suction:** Longer pump life; pump always stays primed. No pump rusting during shut-down periods. Air bleed valves are not required.
- Easy Reservoir Draining:** Pump not required for draining. Drain ball valve provided each end.
- Self Flushing:** System flushes any material in suction line when a pump is replaced.
- Color Code Identification:** Allows for easy identification of items.
- In-Tank Filter System:** Provides easy element replacement without line drainage.
- Convenient Suction Strainer Maintenance:** Clean out access cover allows replacement of suction strainer without draining reservoir.
- Removable Top Plate:** Removable top allows for easy reservoir cleaning. No leaky end bells that make access for cleaning difficult.
- Conserves Space:** While still allowing general maintenance, the stack tank design saves floor space. Multiple pump/ motor assemblies may be mounted under the same reservoir.
- Extended Pump/ Motor Mounting Bars:** Easy pump or motor replacement- pump may be lowered onto bars: electric motor lifting eye accessible.

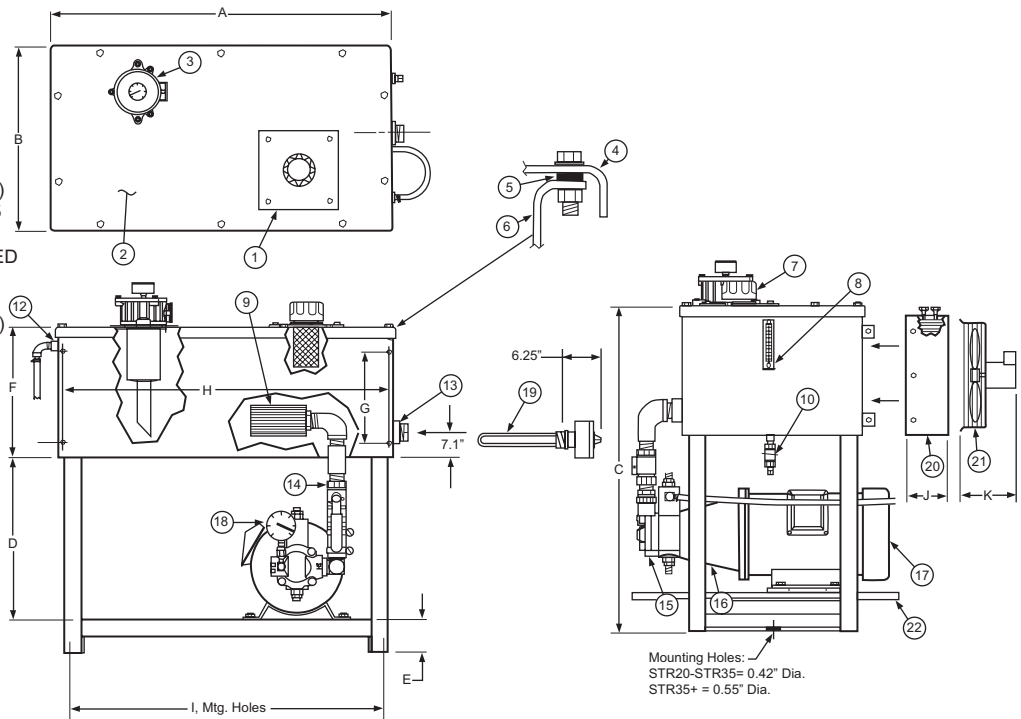


STR100 Stack Tank

### Dimensional Data

- ITEM IDENTIFICATION:**
- CLEAN-OUT COVER (YELLOW)
  - VALVE MOUNTING AREA
  - RETURN FILTER (YELLOW)
  - TANK LID
  - RUBBERIZED GASKET
  - TANK BODY
  - FILLER/ BREATHER #FB-12S (EXTRA BREATHER SUPPLIED 50 GAL+)
  - SIGHT & TEMPERATURE GAUGE #SLG5
  - SUCTION STRAINER
  - 1/2" NPT DRAIN BALL VALVES- PLUGGED
  - MAGNETS (NOT SHOWN)
  - (3) RETURN COUPLINGS STANDARD
  - 2" NPT HEATER COUPLING (OPTIONAL)
  - SUCTION BALL VALVE
  - PUMP
  - PUMP MOTOR ADAPTER (ORANGE)
  - ELECTRIC MOTOR
  - PRESSURE GAUGE WITH SNUBBER
  - HEATER (OPTIONAL)
  - HEAT EXCHANGER (OPTIONAL)
  - COOLING FAN (OPTIONAL)
  - MOTOR MOUNTING BARS
  - PAINT (OPTIONAL)

- COLOR CODES:**  
 BLUE- UNIT COLOR PAINT  
 ORANGE- DANGER  
 YELLOW- MAINTENANCE  
 GRAY- ELECTRICAL



Model Number	Reservoir Capacity	Dimensions (Inches)											Std. Return Filter (10 $\mu$ )	4" Lip Drip Pan	Maximum Horsepower
		A	B	C	D	E	F	G	H	I	J	K			
STR20	20 Gallon	32.0	17.5	37.3	19.5	5.5	12.0	8	30.6	28.4	4.25	5.9	ITF200-12FS-10MNPE	30.9" x 48"	10
STR35	35 Gallon	36.5	22.5	41.0	21.5	6.0	13.5	8	35.3	32.5	4.25	6.0	ITF250-12FS-10MNPE	30.9" x 48"	15
STR70	70 Gallon	46.5	26.3	52.5	29.0	7.25	16.5	8	45.3	42.5	4.25	6.0	ITF425-24FS-10MNPE	38.8" x 52"	50
STR100	100 Gallon	46.5	26.3	58.3	29.0	7.25	22.0	8	45.3	42.5	9.0	6.0	ITF450-24FS-20-10	38.8" x 52"	100
STR150	150 Gallon	46.5	26.3	69.3	29.0	7.25	34.0	8	45.3	42.5	9.0	6.0	ITF450-24FS-30-10	38.8" x 52"	100



# HYDRAULIC POWER UNITS

STACK TANK - RIGHT ANGLE

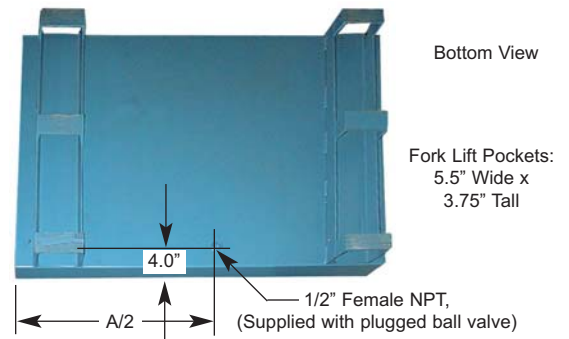
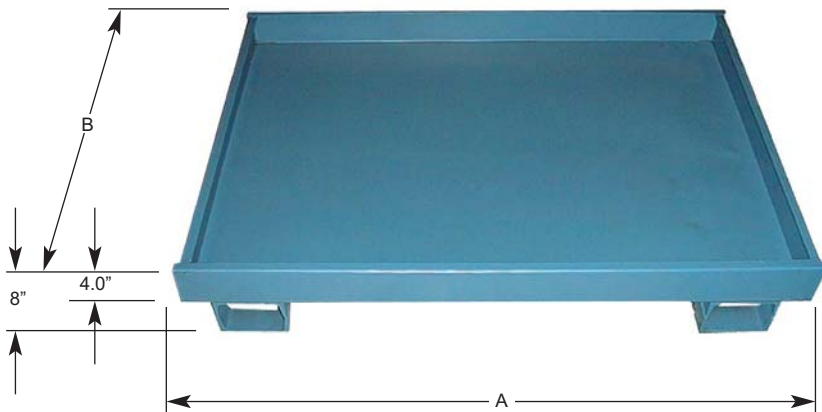


STR Series



**STR100-50HP-PCP77 Stack Tank:**  
D08 valve, Pump solenoid on/off, Drip pan

## Drip Pans



Model Number	Reservoir Capacity	A	B
DP35	35≤ Gallon	48"	30.9"
DP70	70+ Gallon	52"	38.8"



# HYDRAULIC POWER UNITS

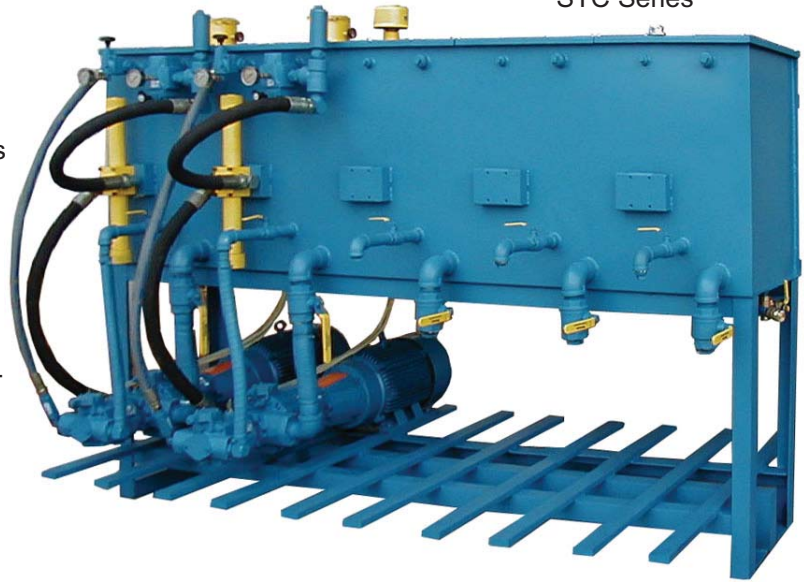
## STACK TANK - CENTRAL SYSTEMS



STC Series

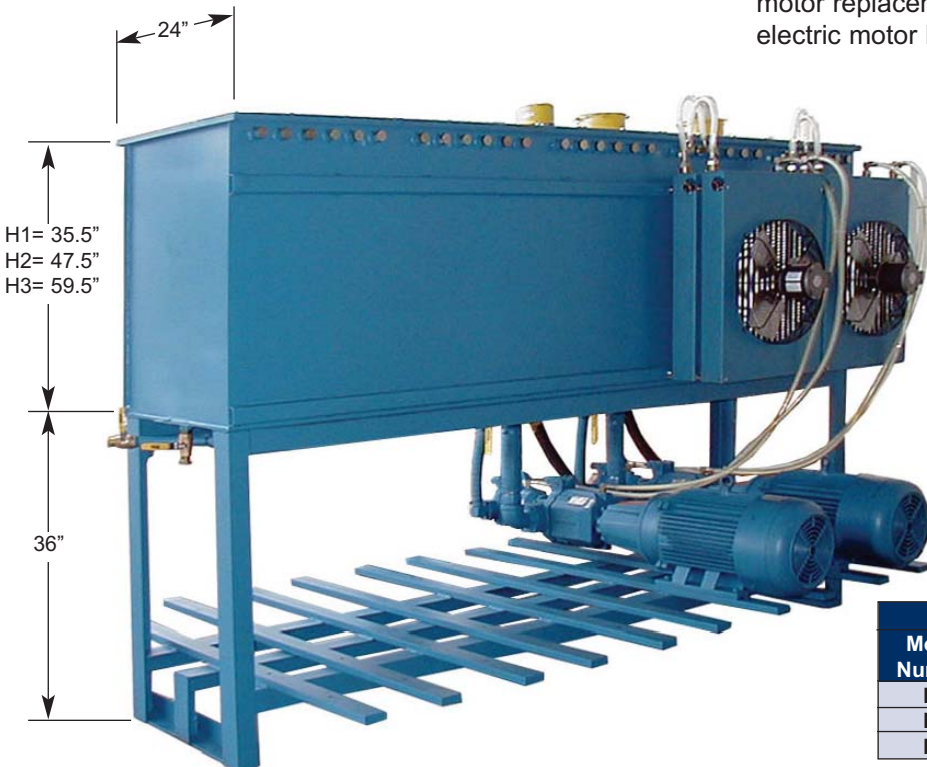
### Features

1. **Expandable Central Systems:** Additional pump and motor assemblies may be added for future expansion.
2. **Flooded Suction:** Longer pump life; pump always stays primed. No pump rusting during shut-down periods. Air bleed valves are not required.
3. **Easy Reservoir Draining:** Pump not required for draining. Drain ball valve provided each end.
4. **Self Flushing:** System flushes any material in suction line when a pump is replaced.
5. **Color Code Identification:** Allows for easy identification of items.
6. **In-Tank Filter System:** Provides easy element replacement without line drainage.
7. **Kidney Loops:** Filtration and/ or cooling loops may easily be added to standard tanks.
8. **Convenient Suction Strainer Maintenance:** Clean out access cover allows replacement of suction strainer without draining reservoir.
9. **Removable Sectional Top Plates:** Removable top plates allows for future expansions as well as easy reservoir cleaning without removing the entire lid. No leaky end bells.
10. **Large Mounting Area:** Heat exchangers, relief valves, pressure filters etc. may be mounted along the reservoir walls.



**STC-H1X10- Stack Tank (400 Gallons)**  
Shown with PCP77 and tandem mounted PCP28 piston pumps and PF20 pressure filters

11. **Conserves Space:** While still allowing easy maintenance, the stack tank design saves floor space. Multiple
  12. pump/ motor assemblies may be mounted under the same reservoir.
- Extended Pump/ Motor Mounting Bars:** Easy pump or motor replacement- pump may be lowered onto bars: electric motor lifting eyes are accessible.



Unit equipped for future expansion.

Two stacked HE562 case drain heat exchangers (one per pump) utilizing the same fan.

Full length sight gauge tube (not shown) provided this series.

Lexan tube is protected by steel frame. Shut off ball valves also provided

Model Number	Tank Size, Gallons				
	Tank Length				
	4'	6'	8'	10'	12'
H1	160	240	320	400	480
H2	220	330	440	550	660
H3	280	420	560	700	840

